



The signature, which symbolically expresses TOYO INNOVEX's statement
"Innovate Customer Experience," continues to evolve dynamically,
embodying our commitment to proposing technological innovations
and experiential value that go beyond imagination.



Create the value with innovation

C O M P A N Y
P R O F I L E



COMPANY PROFILE

Company Name	TOYO INNOVEX Co., Ltd.
Foundation	May 16, 1925
Capital	2.5 billion yen (Listed on the Tokyo Stock Exchange Standard Market: Securities Code 6210)
Representative	President & CEO Tabata Yoshiaki
Number of Employees	767 (As of March 2024)
Products	Plastic Injection Molding Machines and Related Products Die-casting Machines, Peripheral Automation Equipment, and Related Products
Head Office and Factory	523-1, Fukusato, Futami, Akashi-shi, Hyogo 674-0091, Japan TEL: 078-942-2345 [Representative] FAX: 078-943-7275
URL	https://www.toyo-invx.com/



TOP MESSAGE

Turning 100 years of gratitude into strength for the future

We will continue to take on the challenge of technological innovation
and providing solutions that lead to the next 100 years.

Our company was founded 100 years ago, on May 16, 1925. At the time of its founding, our main products were spinning machines. However, after World War II, as Japan's industrial structure changed and plastics began to be introduced in various fields during the period of rapid economic growth, we started designing, developing, and selling Plastic Injection Molding Machines around 1959, contributing to the mass production of plastic products. Around the same time, we also began producing die-casting machines against the backdrop of the growing automotive industry. This played a significant role in the widespread adoption of automobiles. Since then, for over half a century, we have supported convenient and enriched lifestyles as a dedicated manufacturer of Plastic Molding Machines and Die-casting Machines.

Our company, celebrating its 100th anniversary, is taking a new step forward under the name 'TOYO INNOVEX.' 'INNOVEX' is a new word we created by combining 'INNOVATION' and 'EXPERIENCE.' It embodies our strong commitment to continuously driving innovation in our customers' value experiences through our technical

expertise while enhancing the value of their products.

Reaching our 100th anniversary is a significant milestone, but it is also just one step on our path toward further growth and development. Under our new name, TOYO INNOVEX, we will continue to build on our expertise in molding and casting technologies while leveraging advanced technologies such as AI. By going beyond conventional product development, we aim to deliver innovative technologies, new added value, and cutting-edge solutions.

We invite you to look forward to the exciting
new journey of TOYO INNOVEX.

President & CEO
Tabata Yoshiaki



TOYO INNOVEX Co., Ltd. TOYOイノベックス株式会社

We coined the term '**INNOVEX**' by combining '**INNOVATION**' and '**EXPERIENCE**' to express our commitment to continuously driving unprecedented innovation in our customers' value experiences in the molding and casting industries, leveraging the technical expertise we have cultivated as a dedicated industrial machinery manufacturer. In addition, "TOYO" has been widely recognized both in Japan and

internationally as a brand built over many years. To carry forward this brand identity, we incorporated it into our new company name. While our core focus will remain on the molding and casting industries, we have chosen a name without the words 'Machinery' or 'Metal' to allow for greater flexibility in expanding our business domains in the future.



BRAND STORY

PURPOSE

PURPOSE

Innovation in Molding and
Casting & Customers' Value Up
for a Prosperous Future!
Bringing Smiles to the World.

VALUES

VISION

VISION

To Facilitate Easier
Molding and Casting

HISTORY

Transforming the Changes of the Times into the Evolution of Value

Since our founding, we have sincerely addressed our customers' needs and the changes in society, while striving for technological innovation and creating new value. Through this, we have built trust with our customers. We are now facing an era where the future is uncertain and predictions are difficult. However, we have a history of growth through evolving the technologies and values we offer. With pride in the steps we've taken so far, we will utilize them for future growth. Using 'molding and casting' as our key concept, we will expand the possibilities of manufacturing.

1925	Spun off from the textile spinning machinery division of Kobe Steel, Ltd., and founded as Bouki Seizo Co., Ltd. to start manufacturing textile machinery.	2010	Starts manufacturing Die-casting Machines at Toyo Machinery (Changshu) Co., Ltd. in China.
1949	Listed on the second section of Osaka Stock Exchange.	2010	Enters into a supplier partnership with Husky, a Canadian company.
1959	Starts manufacturing Plastic Injection Molding Machines.	2011	Wins the 8th New Machinery Promotion Award and the Minister of Economy, Trade and Industry Award from the Japan Machinery Promotion Association for the 'Energy-efficient Compact Low-pressure Die-casting System, which was jointly developed with DENSO Corporation and Miyamoto Kogyosho.
1962	Renamed Toyo Machinery & Metal Co., Ltd.	2014	Forms a capital and business alliance with The Japan Steel Works, Ltd. and UBE MACHINERY CORPORAYION, Ltd.
1963	Starts manufacturing Die-casting Machines.	2014	Starts manufacturing Fully Electric Die-casting Machines.
1970	Becomes an affiliate of Hitachi, Limited.	2016	Establishes Toyo Machinery & Metal (Taiwan) Co., Ltd. in Taiwan.
1981	Establishes Toyo Machinery Engineering Co., Ltd.	2019	Strengthens the sales structure in the European market through a capital alliance with our distributor in Italy.
1985	Starts manufacturing Fully Electric Injection Molding Machines.	2019	Upgrades India Representative Office to India Branch Office.
1988	Establishes Toyo Koki Co., Ltd.	2020	Establishes TOYO MACHINERY VIETNAM CO., LTD in Vietnam.
1997	Acquires ISO9001 certification.	2020	Completes a large-scale machinery assembly factory in Akashi, at the headquarters.
1998	Starts manufacturing Optical disc molding machines.	2021	Establishes PT TOYO MACHINERY AND METAL INDONESIA in Indonesia.
2000	Acquires ISO14001 certification (at head office and factory).	2023	Shifts to the Tokyo Stock Exchange Standard Market.
2000	Establishes TOYO MACHINERY (M) SDN.BHD. in Malaysia.	2024	Starts operation of the Service Logistics Center in Akashi, at the headquarters.
2002	Establishes TOYO MACHINERY (T) CO., LTD. in Thailand.	2025	Renamed TOYO INNOVEX Co., Ltd.
2003	Establishes Toyo Machinery & Metal (Shanghai) Co., Ltd. in Shanghai, China		
2005	Listed on the first section of Tokyo Stock Exchange.		
2006	Launches Electric Die-casting Machine.		
2007	Establishes Toyo Machinery (Changshu) Co., Ltd. in China, our first overseas manufacturing base.		
2008	Establishes Toyo Machinery (Guangzhou) Co., Ltd. in China.		
2008	Starts manufacturing Fully Electric Injection Molding Machines at Toyo Machinery (Changshu) Co., Ltd. in China.		

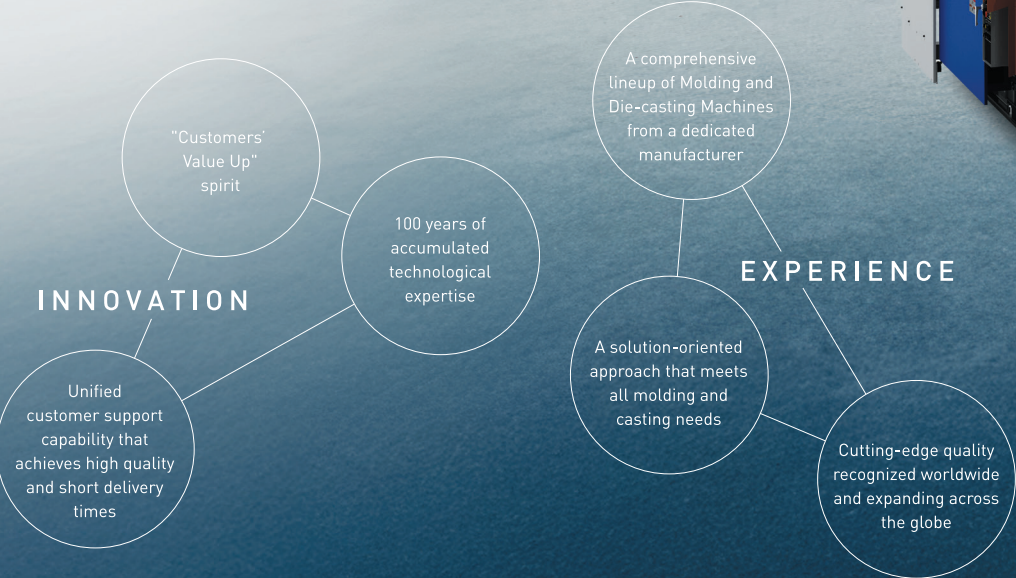
100TH
ANNIVERSARY
SPECIAL SITE



FUTURE

Creating new "things," one after another

What can we do to solve the overflowing social issues?
Can we make molding and casting, an essential part of every kind of manufacturing, simpler?
Can we expand the possibilities of molding and casting technology for a future we have yet to see?
With TOYO INNOVEX, we can create any shape of the future, someday. By generating INNOVATION and delivering countless EXPERIENCES, we will continue to create connections with the future and the world.



INNOVATION

We have the technology to tackle challenges

What kind of world will the future of manufacturing create?
Things that are unimaginable today might be created.
Things that are impossible to make today
might become part of our daily lives.
New manufacturing requires new technology.
That's why TOYO INNOVEX continues to challenge INNOVATION.



Customers' Value Up

The essence of our manufacturing strength lies in the spirit of "Customers' Value Up," which is fundamentally rooted in "sincerity." In a society with diverse values, the ability to understand others and act in their best interest is essential. Through inter-departmental and inter-generational collaboration, we embrace a variety of values and perspectives, ensuring that our technology and mindset are passed down, with sincerity becoming ingrained as a standard culture. It is this sincerity that enables us to offer personalized approaches and added value to each customer.

Resilience to Meet the Needs of the Times

From the production of molding and casting machines to strengthening after-sales services, responding to new technologies in development, and expanding into global markets, our 'resilience' — the ability to adapt and recover from change — is a cornerstone of our value creation and one of our key strengths.

Unified Customer Support with High In-House Production Ratio

With high in-house production rates based on solid technical expertise and the organizational collaboration built over years of experience, we respond quickly and efficiently to customer needs as a unified company. We provide high-quality products swiftly.

Quality and Reliability Testing That Promises Unwavering Value

To develop products that can fully withstand the operating environments required by our customers, we conduct thorough and repeated reliability tests. Our stringent quality assurance system ensures the "trust" our customers place in our products is firmly established.



EXPERIENCE

We create inspiring manufacturing

All manufacturing exists for the benefit of people —
to live comfortably, to live safely,
to live more conveniently,
more joyfully, and to live a richer life.
TOYO INNOVEX is a company
that creates products for manufacturing.
We create products to generate the joy and
EXPERIENCE that come through the things we make.

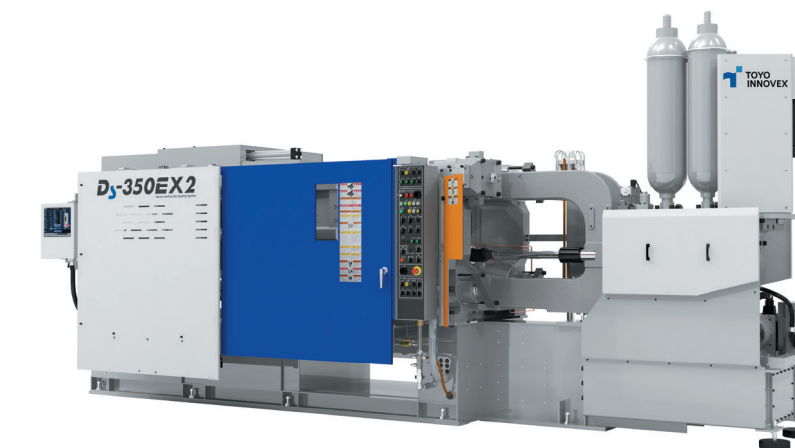
Injection Molding Machines for a Wide Range of Plastic Processing

Our core product, the Injection Molding Machine for plastic processing, ranges from small machines with a 15-ton clamping force to large machines with a 1300-ton clamping force. We meet the diverse needs of industries such as automotive, IT, daily life, and healthcare. Based on our unique know-how, we offer all-electric injection molding technology, as well as plasticizing technology that easily and uniformly melts a variety of resin materials. In addition, we possess specialized molding and processing techniques to achieve the desired molded products. We develop the most suitable molding machines tailored to specific applications.



Die-Casting Machines for Versatile Casting Applications

Die-casting machines designed for casting aluminum, magnesium, and other metals into dies. Our machines enable a wide range of casting applications, from high-strength automotive components to thin-walled IT products. Since 2006, we have been working toward reducing CO₂ emissions by developing electric solutions for die-casting machines, where hydraulic systems have traditionally been the norm. Our proprietary "Electric Intensification Unit" is a key innovation, helping to reduce defect rates while significantly lowering power consumption, contributing to carbon neutrality.



Solution Capabilities to Meet Cutting-Edge Needs

Technology evolves daily, and the demands on manufacturing continue to rise. At the same time, new challenges emerge, driving us to strengthen our solution capabilities through extensive experience, proven expertise, and a flexible development and manufacturing environment. We are committed to advancing solution-driven businesses by addressing critical industry issues, such as workforce development and the transfer of technical skills through AI innovation in the face of skilled worker shortages. Through these efforts, we continue to grow as a sustainable company.



Ongoing Support through After-Sales Maintenance and CS Centers

We are committed to providing thorough after-sales maintenance with a wide range of practical information and services. At the PLASTAR CS Center, we offer support for molding evaluations, prototyping, machine selection, and system proposals. Additionally, we provide operational and maintenance training during machine installation, as well as troubleshooting and process improvement support after deployment. Our DIECAST CS Center is also fully equipped to conduct new component testing and product development, ensuring continued technical support for our customers.



LIFE & ENVIRONMENT

Supporting Daily Life, Embracing the Environment—TOYO INNOVEX

Technology that leads to a better life

Our main product, injection molding machines, excels in molding plastic materials that require both lightness and durability, such as automotive parts, medical devices, and food containers. These machines play a vital role in manufacturing essential plastic products for daily life. Additionally, our die-casting machines specialize in processing aluminum, a material that is lighter and more corrosion-resistant than steel, supporting the production of automotive components. Through our technology, we contribute to a better quality of life in ways that may not always be visible.



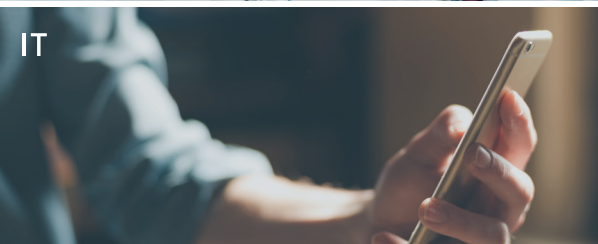
MOBILITY

From exterior components such as bumpers to interior parts like LCD panels and seat belt buckles, as well as essential engine and fuel system components, our die-casting machines play a crucial role in automobile manufacturing.



MEDICAL

In the medical field, our plastic molding technology is deeply involved in the production of syringes, IV components, and other critical medical devices. As medical technology continues to advance, our solutions are expected to contribute even further by enhancing lightweight properties and durability.



IT

Smartphones have become indispensable in modern life. Their protective cases, light guides, and device enclosures are all made possible through plastic molding using our injection molding machines, supporting a more convenient and comfortable lifestyle for everyone.

Sustainable Manufacturing for the Future and Our Planet

As a manufacturing company, it is our mission to consider the global environment and pass on a rich natural world to future generations. We are committed to sustainable manufacturing by promoting plastic resource recycling, reducing CO₂ emissions, and transitioning to renewable energy, addressing the challenges of climate change.

Basic Philosophy of Environmental Policy

With the motto of “developing and producing machines friendly to both people and the environment”, and with profound recognition of being a member of the society, we are committed to acting with due consideration to the global and regional environments in every aspect of our business activities such as locating our production sites and conducting business in harmony with the environment. We put together our organization to tirelessly work on Sustainable Development Goals or SDGs, which are common goals of the global society.

Contribution to the SDGs

Corporate activities have a significant impact on society and the environment. TOYO INNOVEX is strengthening its efforts toward the SDGs in order to contribute to the creation of a sustainable society and the preservation of the natural environment. Through governance grounded in legal compliance and high ethical standards, we enhance the value of markets, the environment, workplaces, and local communities, responding to society's trust through our activities.

[Sustainability Initiatives]

- Development of die-casting technologies that reduce environmental impact
- Development of automation systems
- Hosting of National Skill Certification Tests
- Compliance with the TOYO INNOVEX Group's Code of Conduct
- Promotion of women's participation and advancement
- Creation of connected workplaces using IoT
- Hosting of technical schools
- Promotion of greening efforts (biodiversity protection)
- Promotion of health management
- Harmonious relationships with local communities

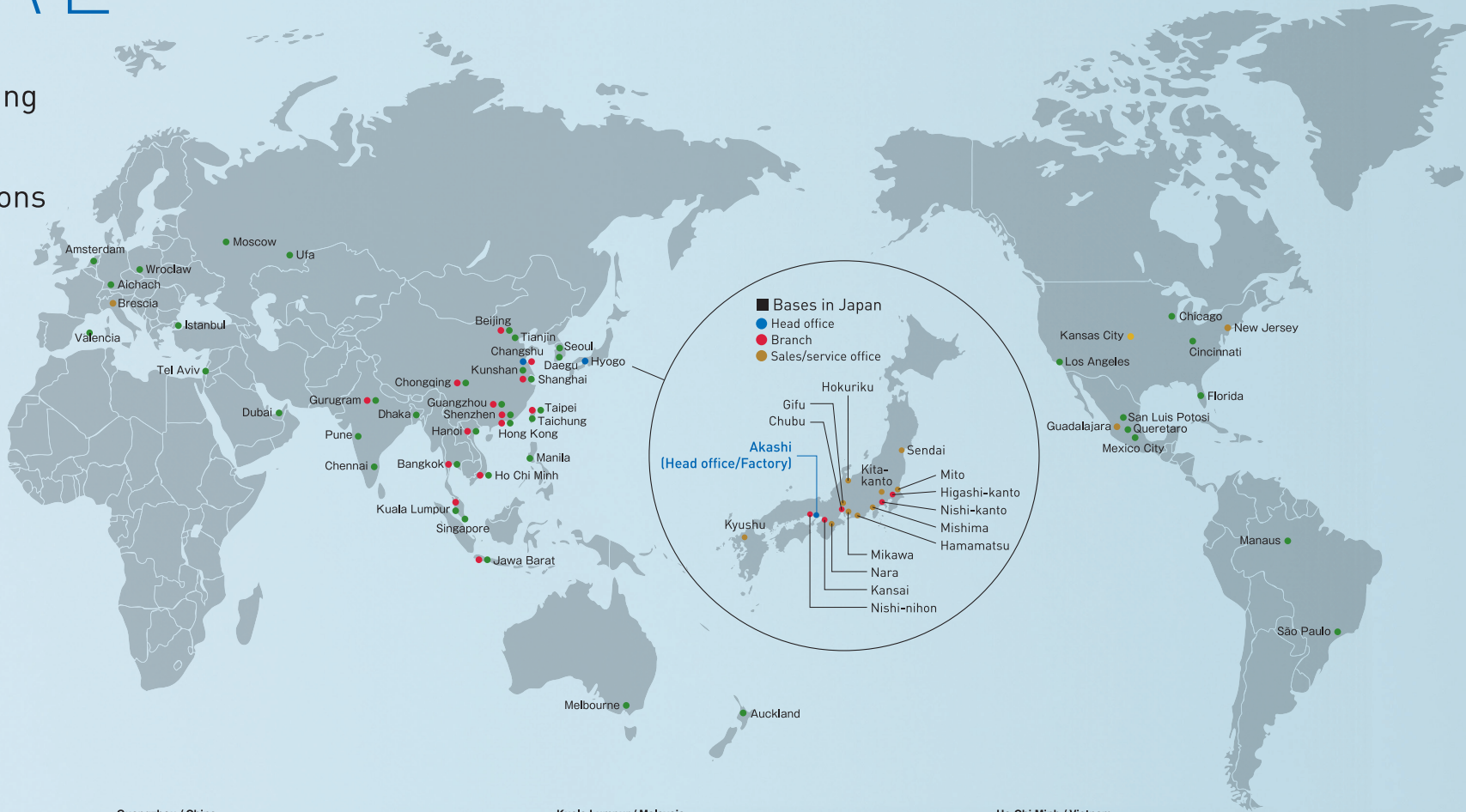
SUSTAINABLE DEVELOPMENT GOALS



GLOBAL

A Global Network Linking
16 Domestic Sites and
63 International Locations

TOYO INNOVEX's technology is expanding globally, with a focus on China and other parts of Asia, as well as Europe and the Americas. By establishing bases in each region, we ensure that our customers can use our machines with peace of mind, supported by maintenance systems and a prompt supply of service parts. We will continue to be a global company that contributes to enriching people's lives around the world.



Overseas Division
523-1 Fukusato, Futami-cho, Akashi City, Hyogo 674-0091 Japan
(Tel) +81-78-943-7474 (Fax) +81-78-943-7222

Hong Kong / China
Office No. 7, 12th Floor, Shatin Galleria, 18-24 Shan Mei Street, Fotan, Shatin, New Territories, Hong Kong, China
(Tel) +852-2591-0512 (Fax) +852-2591-9022

Shanghai / China
1903, Xiandai Plaza No.369, Xianxia Road, Shanghai China
(Tel) +86-21-6192-1000 (Fax) +86-21-6192-1006

Beijing / China
1#-B1702, JiaoAo Park, No.59, HuaGong Road, Chaoyang District, Beijing, China
(Tel) +86-10-8595-2240 (Fax) +86-10-8580-4378

Changshu / China
Unit 1, No.56, Xiangjiang Road, Economic Zone, Changshu, Jiangsu Province China
(Tel) +86-512-5288-9300 (Fax) +86-512-5266-2500

Guangzhou / China
Room 612-613, Tianhe Commercial Building, Linhe Rd., Tianhe, Guangzhou China
(Tel) +86-20-3888-0271 (Fax) +86-20-3888-0272

Chongqing / China
Room 2016, Building 4, No.18 Hongsheng Road, Jiangbei District, Chongqing
(Tel) +86-23-6707-4207 (Fax) +86-23-6707-4226

Shenzhen / China
No.206A, Block3, Zhuoyuemeilinzhongxingguangchang(bei), Zhongkang Rd, Futian, Shenzhen, China
(Tel) +86-755-8270-3726 (Fax) +86-755-8270-3279

Taipei Taiwan
5F-2, No. 88, Section 2, Chung Hsiao East Road, Taipei
(Tel) +886-2-2393-0272 (Fax) +886-2-2393-0273

Changshu Factory / China
No.56, Xiangjiang Road, Economic Zone, Changshu, Jiangsu Province China
(Tel) +86-512-5235-8688 (Fax) +86-512-5235-8509

Kuala Lumpur / Malaysia
E-G-49, Jalan PUJ 1/45, Aman Suria Damansara, 47301 Petaling Jaya, Selangor, Malaysia
(Tel) +60-37880-5921 (Fax) +60-37880-5922

Jawa Barat / Indonesia
Jl. Kenari Raya Blok G6-01 Kav. 10B, Japanese SME's Center, Delta Silicon VI, KeL. Jayamukti, Kec. Cikarang Pusat, Kab. Bekasi, Prov. Jawa Barat, 17530, Indonesia
(Tel) +62-21-8992-8250 (Fax) +62-21-8992-7160

Bangkok / Thailand
662/17 Rama 3 Road Bangpoo, Yannawa Bangkok 10120 Thailand
(Tel) +66-2-358-0101 (Fax) +66-2-358-0106

Hanoi / Vietnam
Room 301C DMC TOWER 535 Kim Ma, Ba Dinh Dist., Hanoi, Viet Nam
(Tel) +84-24-3512-1082 (Fax) +84-24-3512-1084

Ho Chi Minh / Vietnam
8th Floor, Cao Thang Mall, 19 Cao Thang Street, Ward 2, District 3, Ho Chi Minh City, Vietnam
(Tel) +84-28-2220-0925 (Fax) +84-28-2220-2201

Gurugram / India
Office No.5,09, Mooz Offices, 5th Floor, Tower A, Park Centra Building, Sector-30, Gurugram-122001, Haryana, India
(Tel) +91-124-601-7979 (Fax) +91-124-601-7921

- Head office/Factory
- Global Business Locations
- Distributor with a resident engineer from Japan
- Distributor or sales agent